

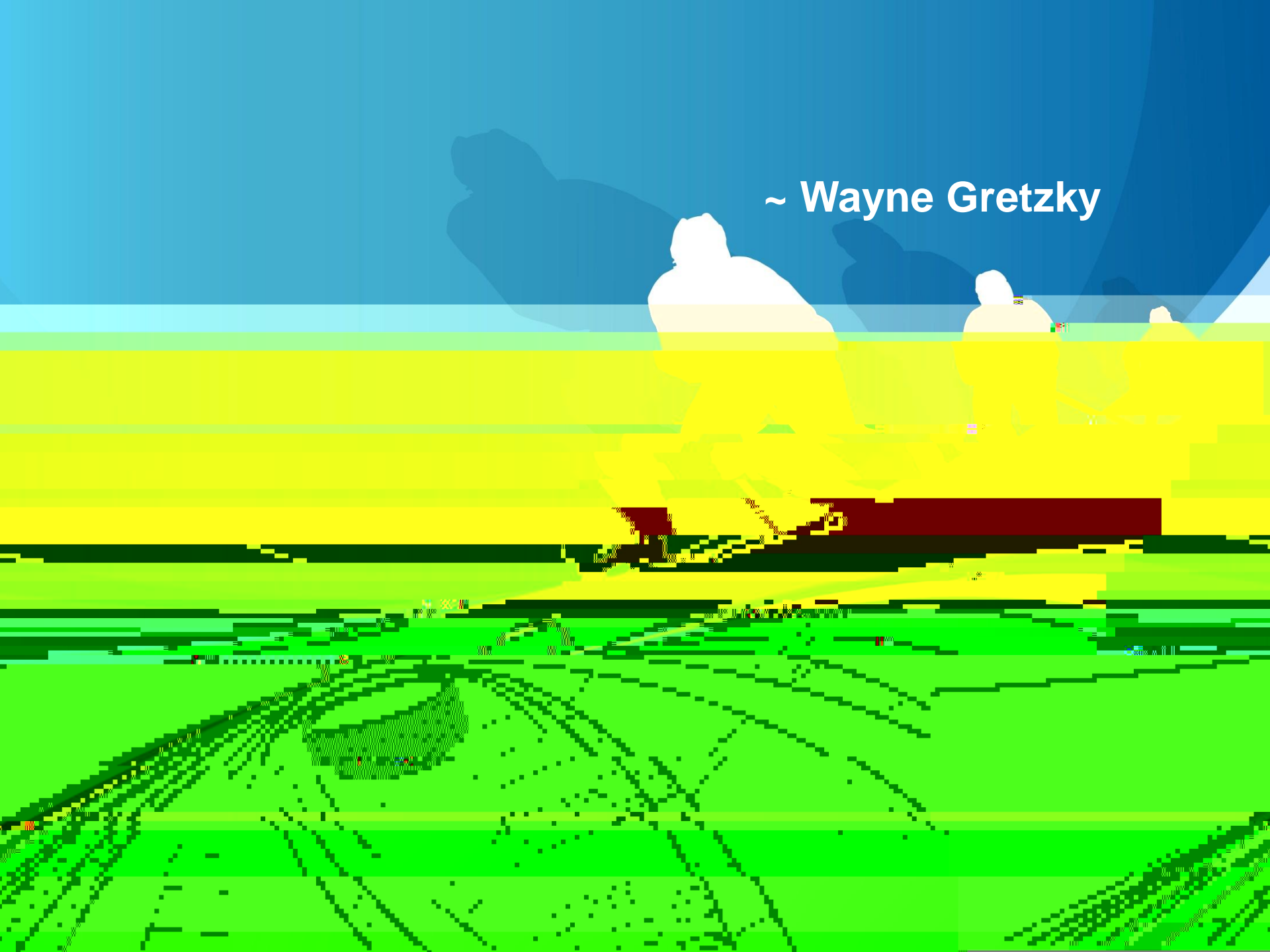
Implications for Health Care Post Reform

Wednesday, November 13, 2013

A. Hugh Greene
President and CEO



~ Wayne Gretzky



Assumptions for



Assumptions for

3. **Consumerism in health care will continue to rise with greater transparency of price and outcomes.**



Assumptions for

3. **Consumerism in health care will continue to rise with greater transparency of price and outcomes.**
4. **Greater provider accountability for performance related to quality, safety, patient satisfaction and costs.**



Assumptions for

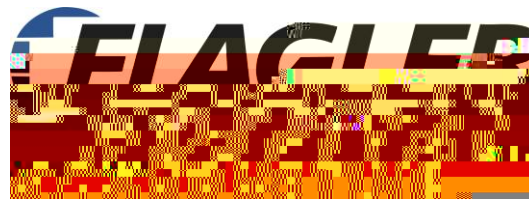
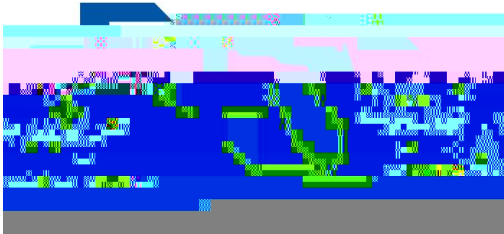
3. **Consumerism in health care will continue to rise with greater transparency of price and outcomes.**
4. **Greater accountability for performance related to quality, safety, patient satisfaction and costs.**
5. **Greater integration of health care providers.**



5. Greater integration of health care providers



5. Greater integration of health care providers



Assumptions for





Changing Health Care

